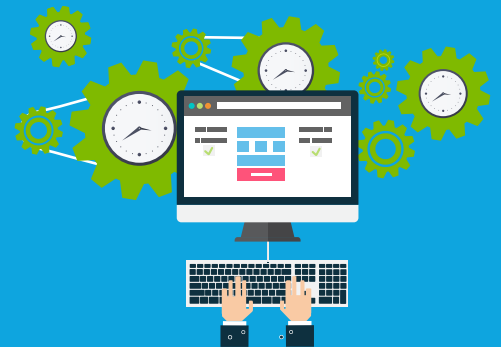




The main utility of ENMARCHA is to provide a **standardization** in the way of we develop on SharePoint, so that facilitates the adoption of the platform for new developers. For this reason from the very beginning we have tried to make it available for **downloading** in the main distribution managers such as Nuget, NPM, Yeoman, so they can use it in a **simple** and **integrated** way with your favorite tool.



Up to the date, the number of downloads:



+1500
Downloads since June



+100
Downloads since June



It is important that ENMARCHA can reach a large number of developers. And it is also important that the Community adopt it as one of its favourite tools and contribute to the future growth of the project. For this reason, we released it as **Open Source** under MIT Licensed on GitHub. Until now the contributions are being quite important, there are more than **100 "clones"** of the repository, as well as more than **5 pull Requests**.

Several clients use ENMARCHA in their projects to enhance integration capabilities with SharePoint, both in the deployment and in the use of the API server. In these moments, there are more than 20 active projects in clients with implementations of ENMARCHA.





About ENMARCHA

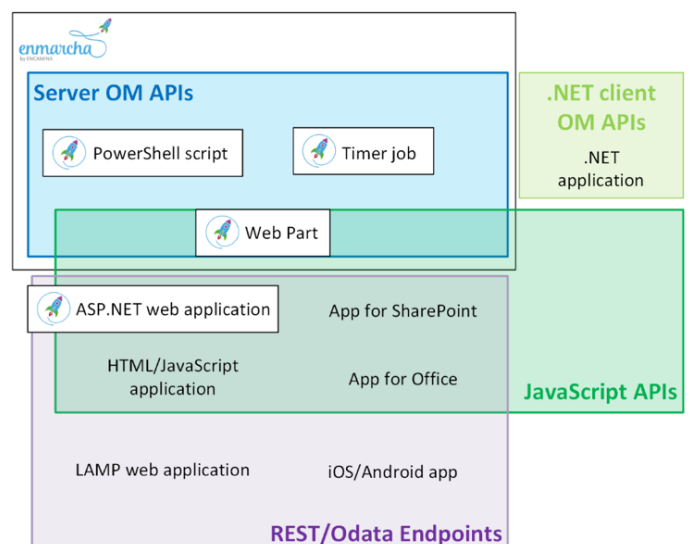
ENMARCHA was born as a library where the team was unifying the functions that project after project were using. After realizing that this library contained many lines of code, but that it was not easily maintainable, we decided to give a sense and organization to it, so people who starts into developments on SharePoint could use it.



In our first project where we use it, the development time was **reduced by 20%** approximately working with people with less experience in SharePoint. This earnings were used in time of Testing and improvements in the platform, what took in satisfaction to the client.

ENMARCHA has been used in the **most important** projects that has been developed in Spain on SharePoint.

ENMARCHA architecture





ENMARCHA

Functionalities



Enhance the deployment of our solution through **PoweShell**, in this way we can be integrate ENMARCHA with Build Tools as Visual Studio Team Services, Jenkins, etc. Facilitating the ALM of the solution.

TypeScript Library

>50
FUNCTIONS
+1000
CODE LINES



Extension of the SharePoint SDK, in order to **standardize** things and reuse the generated code so that every time we are not building new functionality.

Implemented in C# library

+2000
CODE LINES
>100
CLASSES



Access to the log layer by default.

Integrates with other products/applications like Pattern and Practices Microsoft project, with the engine flows of Nintex, etc.



PowerShell Library

>150
FUNCTIONS
+1000
CODE LINES

ENMARCHA implements a "Repository" pattern with the purpose of being able to use tools like they do like the rest of technology. The use of this pattern also facilitates the Unit Testing, in which we can develop high-quality software with a reduced number of bugs.



Testimonials

"Enmarcha allows everyone to develop for SharePoint using good practices and writing good code."

"Enmarcha simplifies developing for SharePoint exposing methods with semantic names which do exactly what we expect they do and better"

Santiago Porras - MVP Windows Platform Development - ENCAMINA



"As a SharePoint profesional for a long time, I had suffered with SharePoint personalizations not made with all desirable care and knowledge. From my point of view, is a bless to be able to use frameworks like ENMARCHA that empower the programmer, both experts and beginners, to use best practices and patterns, even without knowing explicitly that this use has been made. The use of this framework ensure the quality of the code produced, and the best approach to the personalizations made. It boast the satisfaction of the client, and the health of the platform."

Fabián Calvo - Cloud Consultant and SharePoint - ENCAMINA

"SharePoint developing is easier now thanks to Enmarcha. I find Enmarcha an essential tool to develop. Highly recommended!"

Adriám Prats - QA Engineer - ENCAMINA



The ENMARCHA Framework marks a milestone in the way we work as SharePoint developers. So far, the SharePoint developers were far from good practices, design patterns, methodology, Which prevented us to evolve with the Framework and made us look enviously the .Net community. Clearly, ENMARCHA helps a little to save this step to unify development models and also for the agnostics, facilitates the implementation reducing time and costs.

Sergio Hernandez - Team Leader - ENCAMINA

"As Microsoft PnP project, ENMARCHA allow us to implement secure deployment using files definition and PowerShell scripts avoid problematic feature deployments. Like other Open Source projects, we can contribute to have a better world of SharePoints"

Juan Carlos González Martín, Office Servers and Systems MVP

"I have worked with SharePoint from first version and I always lookup for a way to apply better pattern on my projects. ENMARCHA facilitates the adoption of SharePoint API and work with modern development patterns"

Gustavo Velez, Office Servers and Systems MVP

"ENMARCHA is a Open Source project to consider when you work with SharePoint, it allows to implement business logic as any other project and talk with SharePoint in a friendly way"

Fabian Imaz, Office Servers and Systems MVP



About ENCAMINA

Thinking in colors is our fresh, optimistic and committed attitude which uses inventiveness and creativity for finding **technology solutions** and **talent** that improve people's present time, business and society.

+10 Innovation awards

+400 Competitive clients



Having a **team** of passionate and committed people, highly specialized in Microsoft technology and solutions on **Office365, SharePoint, Yammer, Dynamics CRM, Power BI** and **Azure**.

+500 Projects with Microsoft technologies

+200 Microsoft certifications



With offices in Valencia, Madrid and Barcelona ready to fly **anywhere in the world** where we can contribute what **we do best**.

+15 years

2013 Best Microsoft Partner in SMB category

